

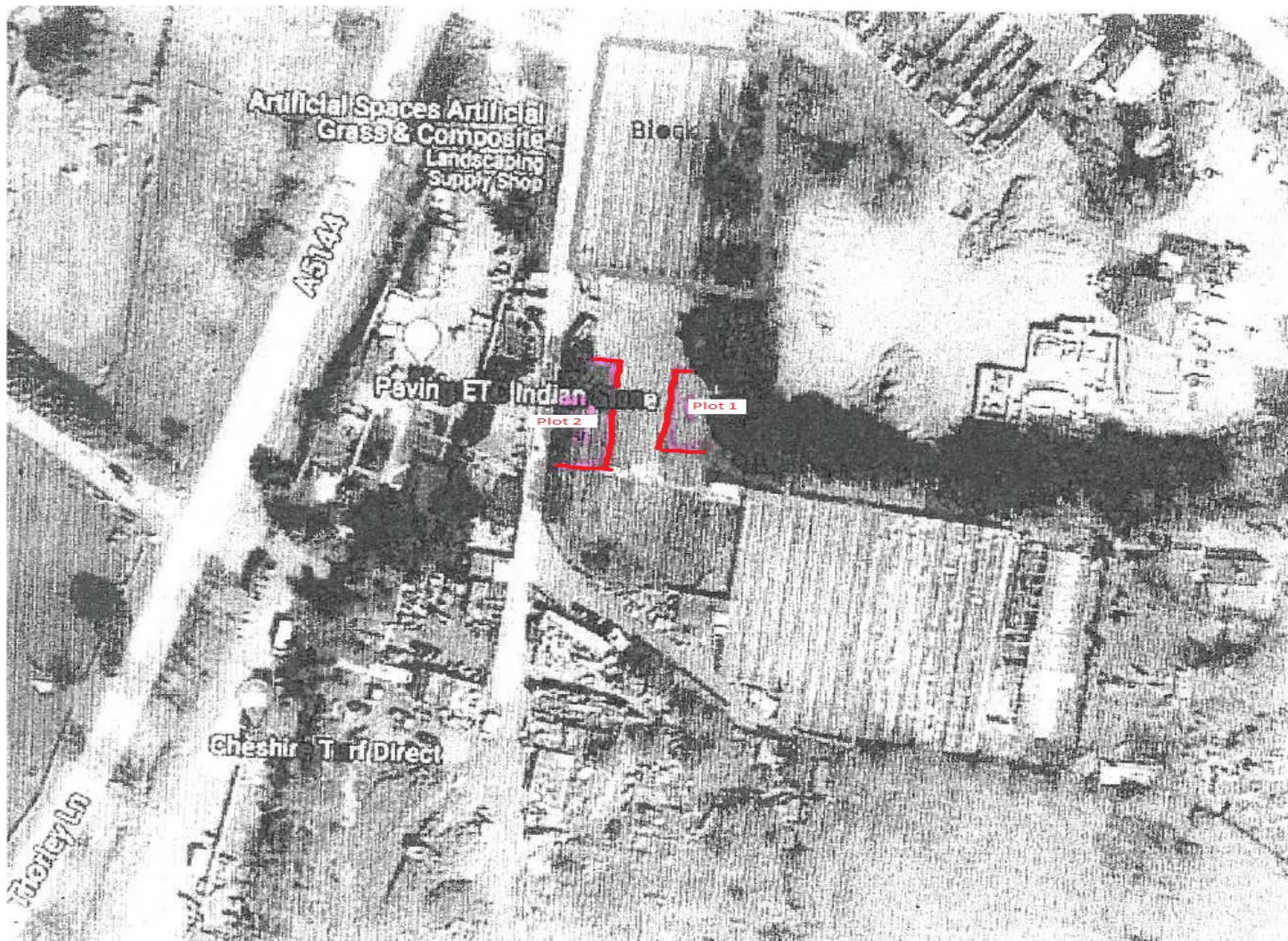
**CLAY LANE NURSERIES
CLAY LANE/THORLEY LANE
TIMPERLEY, CHESHIRE WA15 7AF
TO LET FROM - £400 PCM**



**TWO PLOTS OF OPEN HARD CORED LAND
WITHIN A GATED COMPOUND
PLOT 1 – 116.1 SQ.M. (1,250 SQ.FT.). £400 PCM
PLOT 2 – 209 SQ.M. (2,250 SQ.FT.). **£500 PCM NOW LET**
SUITABLE FOR STORAGE**

Situated just off Thorley lane close to the junction with Clay lane we are able to offer to the market two individual plots of land ideal for external storage. See availability list below.

The main access is off Thorley lane with the benefit of a secondary access off Clay Lane. The site benefits from perimeter fencing and secured gated access.



Plot 1 (1,250 sq.ft.)(116.1 sq.m) **£400 pcm**

Outside Hard Cored Land suitable for 2x 20ft containers and a skip.

Plot 2 (2,250 sq.ft.)(209 sq.m) **£500 pcm- NOW LET**

Outside Hard Cored Land suitable for 2x 20ft containers and a skip.

Lease Terms

Available on flexible terms not exceeding an initial term of 2 years.

Viewing Arrangements

by appointment through Thomas Willmax on 0161 905 3555

These particulars are believed to be accurate but they are not guaranteed and do not form a contract. Neither Thomas Willmax nor the vendor or lessor accept any responsibility in respect of these particulars which are not intended to be statements or representations of fact and any intending purchaser or lessee must satisfy himself by inspection or otherwise as to the correctness of each of the statements contained in these particulars.